

IT'S TIME TO  
**UPGRADE**  
**YOUR POOL GAME** »



**Pool Coping**



**Landscaping**



**Fire Features**



**Water Features**

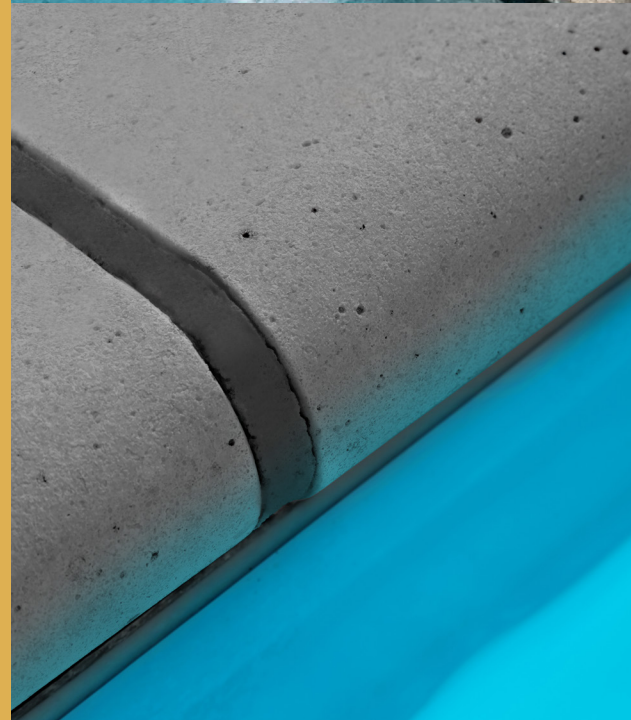


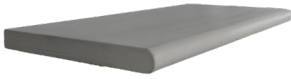
**Fire & Water Features**



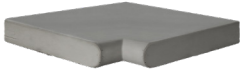
**Design Cast**

[designcastproducts.com](http://designcastproducts.com) | 602.569.6090



**NEW!****Bullnose Coping | 1.5 Inch Height**Color Options: [Coping Palette](#)**Bullnose | 1.5" Height | Straight**

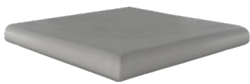
Model Number	Piece Type	Width	Height	Length	Description	Weight
513BN0ST	Straight	13	1.5	24	1 Finished Side	35
518BN0ST	Straight	18	1.5	24	2 Finished Sides	35
518BNCOS	Straight	18	1.5	24	End Piece / 3 Finished Sides	35

**Bullnose | 1.5" Height | Inside Corner**

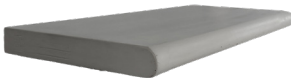
Model Number	Piece Type	Width	Height	Length	Description	Weight
513BNCIS	Inside Corner	14	1.5	14	-	35

**Bullnose | 1.5" Height | Inside Corner - Jumbo**

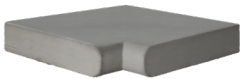
Model Number	Piece Type	Width	Height	Length	Description	Weight
513BNISC13	Inside Corner - Jumbo	19	1.5	19	-	35
518BNISC18	Inside Corner - Jumbo	24	1.5	24	-	35

**Bullnose | 1.5" Height | Outside Corner**

Model Number	Piece Type	Width	Height	Length	Description	Weight
513BNCOS	Outside Corner	13	1.5	13	-	35

**NEW!****Bullnose Coping | 2 Inch Height**Color Options: [Coping Palette](#)**Bullnose | 2" Height | Straight**

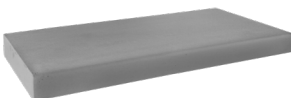
Model Number	Piece Type	Width	Height	Length	Description	Weight
612BN0ST	Straight	12	2	24	-	46

**Bullnose | 2" Height | Inside Corner**

Model Number	Piece Type	Width	Height	Length	Description	Weight
612BNCIS	Inside Corner	12	2	24	-	27

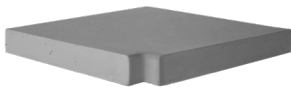
**Bullnose | 2" Height | Outside Corner**

Model Number	Piece Type	Width	Height	Length	Description	Weight
612BNCOS	Outside Corner	12	2	24	-	23

**NEW!****Eased Edge | 1.5 Inch Height**Color Options: [Coping Palette](#)**Eased Edge | 1.5" Height | Straight**

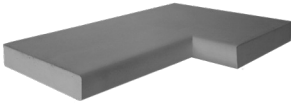
Model Number	Piece Type	Width	Height	Length	Description	Weight
513EE0ST	Straight	13	1.5	24	1 Finished Side	35
518EE0ST	Straight	18	1.5	24	2 Finished Sides	35
518EECOS	Straight	18	1.5	24	End Piece / 3 Finished Sides	35

Eased Edge 1.5" Height - continued



Eased Edge | 1.5" Height | Inside Corner

Model Number	Piece Type	Width	Height	Length	Description	Weight
513EECIS	Inside Corner	14	1.5	14	-	35



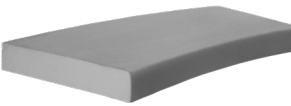
Eased Edge | 1.5" Height | Inside Corner - Jumbo

Model Number	Piece Type	Width	Height	Length	Description	Weight
513EEISC13	Inside Corner - Jumbo	19	1.5	19	-	35
518EEISC18	Inside Corner - Jumbo	24	1.5	24	-	35



Eased Edge | 1.5" Height | Outside Corner

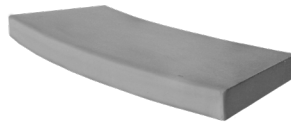
Model Number	Piece Type	Width	Height	Length	Description	Weight
513EECOS	Outside Corner	13	1.5	13	-	35



Eased Edge | 1.5" Height | Radius

Model Number	Piece Type	Width	Height	Length	Radius (feet)	Radius (inches)	Weight
513EEXXX	Radius	13	1.5	24	1' through 50'	12' through 600'	35

**XXX:** This translates to the model # based on the radius (in feet). For example, if you want a 1 foot radius, your model# would be 513EE010, if your radius is 30 feet your model# 513EE300



Eased Edge | 1.5" Height | Reverse Radius

Model Number	Piece Type	Width	Height	Length	Radius (feet)	Radius (inches)	Weight
513EEXXXR	Reverse Radius	13	1.5	24	1' through 50'	12' through 600'	35

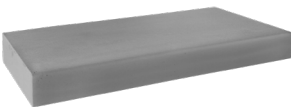
**XXX:** This translates to the model # based on the radius (in feet). For example, if you want a 1 foot radius, your model# would be 513EE010R, if your radius is 30 feet your model# 513EE300R



**NEW!**

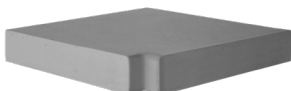
Eased Edge | 2 Inch Height

Color Options: **Coping Palette**



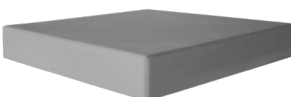
Eased Edge | 2" Height | Straight

Model Number	Piece Type	Width	Height	Length	Description	Weight
612EE0ST	Straight	12	2	24	1 Finished Side	46
618EE0ST	Straight	18	2	24	2 Finished Sides	69
618EECOS	Straight	18	2	24	End Piece / 3 Finished Sides	69



Eased Edge | 2" Height | Inside Corner

Model Number	Piece Type	Width	Height	Length	Description	Weight
612EECIS	Inside Corner	13	2	13	-	27



Eased Edge | 2" Height | Outside Corner

Model Number	Piece Type	Width	Height	Length	Description	Weight
612EECOS	Outside Corner	12	2	12	-	23



## Equipment Pads

Model Number	Shape	Dimensions	Material	Description
EP2402	Square	24" W x 24" L x 2" H	Concrete	Concrete Equipment Pad   Only offered in Gray   Sold by the Pallet (10 pieces)
EP240236	Rectangle	24" W x 36" L x 2" H	Concrete	Concrete Equipment Pad   Only offered in Gray   Sold by the Pallet (10 pieces)
EP260242	Rectangle	26" W x 42" L x 2" H	Concrete	Concrete Equipment Pad   Only offered in Gray   Sold by the Pallet (10 pieces)



## Grass Pavers

Model Number	Description	Weight
CCF2402	Grass Walkway Pavers - 24"W x 2"H	94
CCF3002	Grass Walkway Pavers - 30"W x 2"H	131



## **NEW!** Wok Fire Table

Model Number	Shape	Type	Ignition	Dimensions	Material	Description	Weight
FD-RFT4218	Round	Fire Table	Match Throw	42" W x 18" H	GFRC	Round Fire Table - Stainless Steel Match Throw Burner System	215
FD-RFT4820	Round	Fire Table	Match Throw	48" W x 20" H	GFRC	Round Fire Table - Stainless Steel Match Throw Burner System	256



## Square Oblique Fire Bowl

Model Number	Shape	Type	Ignition	Dimensions	Material	Description	Weight
OSFB2407	Square	Fire Bowl	Match Throw	24" W x 7" H	GFRC	Square Oblique Fire Bowl - Stainless Steel Match Throw Burner System	67
OSFB3008	Square	Fire Bowl	Match Throw	30" W x 8" H	GFRC	Square Oblique Fire Bowl - Stainless Steel Match Throw Burner System	127
OSFB3610	Square	Fire Bowl	Match Throw	36" W x 10" H	GFRC	Square Oblique Fire Bowl - Stainless Steel Match Throw Burner System	242
OSFB4211	Square	Fire Bowl	Match Throw	42" W x 11" H	GFRC	Square Oblique Fire Bowl - Stainless Steel Match Throw Burner System	356
OSFB4813	Square	Fire Bowl	Match Throw	48" W x 13" H	GFRC	Square Oblique Fire Bowl - Stainless Steel Match Throw Burner System	514

Fire Features - continued



## Round Wok Fire Bowl

Model Number	Shape	Type	Ignition	Dimensions	Material	Description	Weight
WSFB2709	Round	Fire Bowl	Match Throw	27" W x 9" H	GFRC	Round Wok Fire Bowl - Stainless Steel Match Throw Burner System	99
WSFB3010	Round	Fire Bowl	Match Throw	30" W x 10" H	GFRC	Round Wok Fire Bowl - Stainless Steel Match Throw Burner System	120
WSFB3311	Round	Fire Bowl	Match Throw	33" W x 11" H	GFRC	Round Wok Fire Bowl - Stainless Steel Match Throw Burner System	180
WSFB3913	Round	Fire Bowl	Match Throw	39" W x 13" H	GFRC	Round Wok Fire Bowl - Stainless Steel Match Throw Burner System	284
WSFB4816	Round	Fire Bowl	Match Throw	48" W x 16" H	GFRC	Round Wok Fire Bowl - Stainless Steel Match Throw Burner System	514
WSFB6020	Round	Fire Bowl	Match Throw	60" W x 20" H	GFRC	Round Wok Fire Bowl - Stainless Steel Match Throw Burner System	833
WSFB7620	Round	Fire Bowl	Match Throw	76" W x 20" H	GFRC	Round Wok Fire Bowl - Stainless Steel Match Throw Burner System	1560



## Round Oblique Fire Table

Model Number	Shape	Type	Ignition	Dimensions	Material	Description	Weight
ROFT4818	Round	Fire Table	Match Throw	48" W x 18" H	GFRC	Round Oblique Fire Table - Stainless Steel Match Throw Burner System	256



## Square Oblique Fire Table

Model Number	Shape	Type	Ignition	Dimensions	Material	Description	Weight
OSFT4818	Square	Fire Table	Match Throw	48" W x 18" H	GFRC	Square Oblique Fire Table - Stainless Steel Match Throw Burner System	367



## Linear Oblique Fire Table

Model Number	Shape	Type	Ignition	Dimensions	Material	Description	Weight
ORFT603018	Linear	Fire Table	Match Throw	60" L x 30" W x 18" H	GFRC	Linear Oblique Fire Table - Stainless Steel Match Throw Burner System	296
ORFT603024	Linear	Fire Table	Match Throw	60" L x 30" W x 24" H	GFRC	Linear Oblique Fire Table - Stainless Steel Match Throw Burner System	390
ORFT723018	Linear	Fire Table	Match Throw	72" L x 30" W x 18" H	GFRC	Linear Oblique Fire Table - Stainless Steel Match Throw Burner System	452
ORFT723024	Linear	Fire Table	Match Throw	72" L x 30" W x 24" H	GFRC	Linear Oblique Fire Table - Stainless Steel Match Throw Burner System	492





### Wok Fire & Water Bowl

Model Number	Shape	Type	Ignition	Dimensions	Material	Spillway Kit	Weight
SWSFB2709	Round	Fire & Water Bowl	Match Throw	27" W x 9" H	GFRC	Stainless Steel	104
SWSFB2709	Round	Fire & Water Bowl	Match Throw	27" W x 9" H	GFRC	Copper	104
SWSFB3311	Round	Fire & Water Bowl	Match Throw	33" W x 11" H	GFRC	Stainless Steel	194
SWSFB3311	Round	Fire & Water Bowl	Match Throw	33" W x 11" H	GFRC	Copper	194
SWSFB3913	Round	Fire & Water Bowl	Match Throw	39" W x 13" H	GFRC	Stainless Steel	294
SWSFB3913	Round	Fire & Water Bowl	Match Throw	39" W x 13" H	GFRC	Copper	294



### Oblique Fire & Water Bowl

Model Number	Shape	Type	Ignition	Dimensions	Material	Spillway Kit	Weight
SOSFB2407	Round	Fire & Water Bowl	Match Throw	24" W x 7" H	GFRC	Stainless Steel	86
SOSFB2407	Round	Fire & Water Bowl	Match Throw	24" W x 7" H	GFRC	Copper	86
SOSFB3008	Round	Fire & Water Bowl	Match Throw	30" W x 8" H	GFRC	Stainless Steel	141
SOSFB3008	Round	Fire & Water Bowl	Match Throw	30" W x 8" H	GFRC	Copper	141
SOSFB3610	Round	Fire & Water Bowl	Match Throw	36" W x 10" H	GFRC	Stainless Steel	258
SOSFB3610	Round	Fire & Water Bowl	Match Throw	36" W x 10" H	GFRC	Copper	258

## Fire Feature + Fire & Water Feature Accessories

### Glass & Media *all glass & media sold in 10lb bags*



## All Weather Electronic Ignition System & Components



Run up to 4 fire features off of one power supply

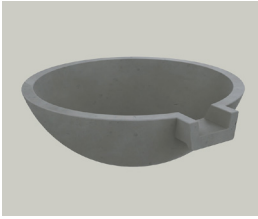


Placing fire features within 5 feet of a water source



Extremely reliable in strong wind and heavy rain

Aweis-24V	Field Serviceable AWEIS Standard Capacity with 18" Field Serviceable Pilot Burner / Natural Gas. Includes 24 volt AC Transformer, Pilot Burner Assembly, Ignition Control Module, Heat Deflector Shield and Install Instructions.
Aweis-30V	Includes: FG-SCNG-30VDC Valve System, 30" Pilot Assembly, Heat Shield, Wire Leads, Hardware Bag - Power Supply Not Included (This system needs a transformer and 18 gauge low voltage wire.)
30V Transformer-5	30VDC Power Supply - POOL CERTIFIED - built into NEMA Approved Enclosure - for use with single installation or up to four fire features, max distance run of 500'
Emergency Shut Off	Emergency Shutoff mounted in Exterior Grade, Single Gang Box with Bubble Cover
E Timer	Mechanical Wind Up Timer mounted in Exterior, Grade Single Gang Box with Bubble Cover

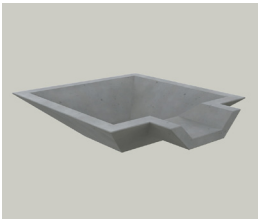


### Wok Scuppers

Model Number	Shape	Dimensions	Material	Description	Weight
SWS2107	Round	21" W x 7" H	Concrete	Round Wok Scupper Bowl with a Single Water Spout	62
SWS2709	Round	27" W x 9" H	Concrete	Round Wok Scupper Bowl with a Single Water Spout	104
SWS3311	Round	33" W x 11" H	Concrete	Round Wok Scupper Bowl with a Single Water Spout	194
SWS3913	Round	39" W x 13" H	Concrete	Round Wok Scupper Bowl with a Single Water Spout	294



We recommend purchasing a copper insert to improve water flow.



### Oblique Scuppers

Model Number	Shape	Dimensions	Material	Description	Weight
SOS2407	Square	24" W x 7" H	Concrete	Square Oblique Scupper Bowl with a Single Water Spout	86
SOS3008	Square	30" W x 8" H	Concrete	Square Oblique Scupper Bowl with a Single Water Spout	141
SOS3610	Square	36" W x 10" H	Concrete	Square Oblique Scupper Bowl with a Single Water Spout	258



We recommend purchasing a copper insert to improve water flow.

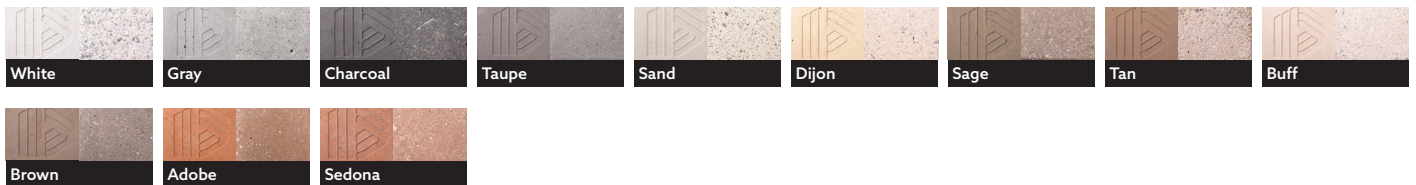


The colors depicted on this page are digitally rendered & printed. Actual product color may vary from the images show on this page. Printed images are intended as a guide and should not be regarded as absolutely correct.

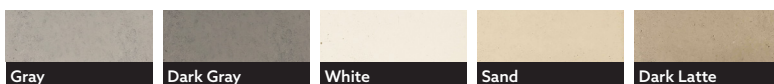
#### HIGH HEAT Color Palette *Left: Smooth | Right: Textured*



#### INTEGRAL Color Palette *Left: Smooth | Right: Sandblasted*



#### COPING Color Palette *Only offered in Smooth*







Upgrade your  
pool game with



**Design Cast**

[designcastproducts.com](http://designcastproducts.com) | 602.569.6090